

essential SKEYNDOR



essential SKEYNDOR



essential line

THE FIRST BEAUTY STEP

Basic cosmetology is the science and art of improving the beauty of normal skin types, including those that, although considered normal, have certain imperfections. The necessary products to treat these skin types form a basic range of cosmetics that cover all the elementary treatment necessities and should be found in any beauty salon. The selection has been designed in a way that the working method is the most efficient and their formulation gives excellent results.



CLASSIFICATION OF SKIN TYPES

There are several ways to classify skin; the most common type is established as normal skin. Any difference from this definition means another skin type. Children and youngsters in general have regular balanced skin. However, with time or through other causes such as an increase or diminution in the secretion of sebum, some skin can become other less desired skin types.

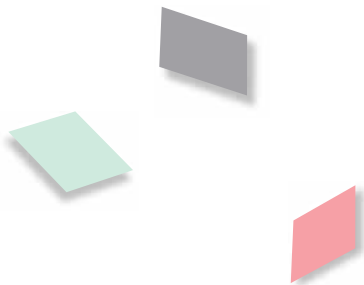
According to this criterion, we can classify the skin in three major groups that are defined in the following:

■ DRY AND NORMAL SKIN TYPES

- Thin and sensitive.
- Not much epicutaneous emulsion.
Matt shine.
- Rough to the touch.
- Difficult to tan, risk of burning if pale.
- Do not tolerate soap and flake easily.

■ OILY AND COMBINATION SKIN TYPES

- Epicutaneous emulsion with external phase oil.
Oily shine, open pores.
- Sticky to the touch.
- Tan easily. Resistant to climate changes.
- Tolerate soap well.
- In combination skin types, there are two types of skin, oily round the T- zone: the nose, chin and forehead, and dry in the remaining areas of the face. They are classified together with oily skin types because their treatment is similar but paying particular attention to the oily areas.



Products classified according to their function and to what skin type they are aimed at:

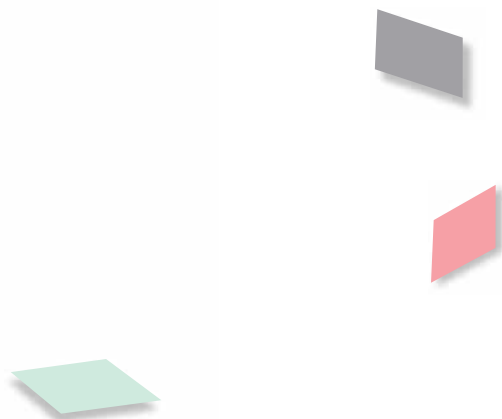
	DRY AND NORMAL SKIN TYPES	OILY AND COMBINATION SKIN TYPES
CLEANSING	EMULSION WITH CAMOMILE. Moisturizing and cleansing	CLEANSING EMULSION with cucumber extract
TONING	CAMOMILE SKIN TONIC	SKIN TONIC WITH HAMAMELIS
EXFOLIATING	SOFT PEELING EXFOLIATING SCRUB ENZYME PEELING GLYCO-30	
CONDITIONING	MOISTURISING MASK CREAM	NORMALISING MASK CREAM
MOISTURISING	HYDRATANT CREAM WITH AMINO ACIDS	MOISTURISING EMULSION. Oily and combination skin
NOURISHING	WHEAT GERM OIL NOURISHING CREAM	
TREATMENT WITH PHIALS	COLLAGEN + ELASTIN FACTOR	



Comprehensive cosmetic line that meets the basic needs of every type of skin.

The new Essential line has been designed to adopt more comfortable formats, with a minimalist image and a young spirit that allows to position this line among the new users of cosmetic products, while maintaining the same high level of quality and comfort that characterizes all Skeyndor products.

Professional formats have been designed with more hygienic and easy-to-use containers that make it easier for the Beauty Salon.



DESCRIPTION OF THE PRODUCTS

DRY AND NORMAL SKIN TYPES



EMULSION WITH CAMOMILE. Moisturizing and cleansing

Emulsion for removing make-up with Camomile extract ideal to soften and protect dry and normal skin types. With remarkable moisturising properties.
Main ingredients: Camomile extract.
250 and 1000 ml.

MOISTURISING MASK CREAM

Mask with radiated clay and Camomile extract that promotes interchanges in the epidermis and moisturises the skin immediately, maintaining an optimal moisture content. For dry and normal skin.

CAMOMILE SKIN TONIC

Tonic to complete the cleansing of dry skin. With toning effects, refreshing and softening.
Main ingredients: Camomile extract.
250 and 1000 ml.



Main ingredients:
Radiated clay.
Camomile extract.
50 and 500 ml.



HYDRATANT CREAM WITH AMINO ACIDS

The amino acids used in this cream are associated with substances that regulate pH levels and active ingredients that moisturise skin. Preserves the hydro-lipidic layer of the epidermis. With sunscreen.

Main ingredients:
Amino acid complex.
Moisturising ingredients.
50 and 200 ml.

WHEAT GERM OIL NOURISHING CREAM

Nourishes the skin effectively due to its content in wheat germ. Fights lack of elasticity. Rich in vitamins, among them vitamin E. Contains apple pip extract rich in phytostimulins, which are cellular messengers with anti-ageing action, phytosterols, tocopherols and essential fatty acids.

Main ingredients:
Wheat germ oil.
50 and 200 ml



OILY AND COMBINATION SKIN TYPES



CLEANSING EMULSION with cucumber extract

Fluid make-up removing emulsion with special ingredients to remove any excess oil from the skin that is secreted throughout the day.

Main ingredients:
Cucumber extract.
250 and 1000 ml

SKIN TONIC WITH HAMAMELIS

Tonic with a high content in Hamamelis, with gently astringent properties. Refreshing and rebalancing. Specially indicated to complete the cleansing of oily and combination skin types.

Main ingredients:
Hamamelis extract.
250 and 1000 ml



NORMALISING MASK CREAM

Clay mask with Hamamelis extract. Slightly astringent, regulates secretion of the sebaceous glands. Absorbs impurities from the skin leaving the face taut and matt.

Main ingredients:
Radiated clay.
Hamamelis extract.
50 and 500 ml.

MOISTURISING EMULSION. Oily and combination skin

Moisturising cream base applied in the morning or before make-up. Skin achieves a matt look, which is oil and shine free. Avoids trans-epidermal evaporation. Does not block pores. Especially advisable for oily skin. With sunscreen.

Main ingredients:
Moisturising ingredients.
50 and 200 ml.





SOFT PEELING

Peeling to eliminate dead cells from the corneal layer and to stimulate biochemical changes in the epidermis. The skin is then ready to receive any treatment. For all skin types. Two or three times a week.
Main ingredients:
Starch.
50 and 200 ml.



EXFOLIATING SCRUB

Exfoliating creamy peel to eliminate dead cells from the corneal layer. For all skin types. Contains round particles with Jojoba oil that leave a pleasant emollient effect over the skin.
Main ingredients:
Jojoba particles.
50 and 500 ml.



ENZYME PEELING Active lotion + Diluting emulsion

Enzymatic treatment to exfoliate the skin. Contains a protease of biotechnological origin whit keratolytic activity that rapidly eliminates any dead cells from the corneal layer, speeding the renewal of the epidermis. Non-irritant.
Main ingredients:
Biotechnological protease.
6 phials with 2,5 ml + 50 ml tube



GLYCO-30

Ideal product to achieve luminosity and provide moisture content for the skin. It speeds up the elimination of flakes that naturally come off the epidermis.

Main ingredients:
Glycolic acid.
20 phials with 2,5 ml.



COLLAGEN + ELASTIN FACTOR

The amino acids that come from mixing collagen and elastine of marine origin together with concentrated moisturising products with immediate effect. With toning, firming and protective properties. These properties can be intensified with ionisation or with a simple massage.

Main ingredients:
Marine collagen.
Marine elastine.
20 phials with 2,5 ml.



the SCIENTIFIC SKINCARE®
SKEYNDOR

SKEYNDOR, S.L.U.
Navas de Tolosa, 148
08223 TERRASSA (BARCELONA)
www.skeyndor.com